

ISLE OF PALMS MANAGED PARKING PROGRAM

**PUBLIC
MEETING**



NO
PARKING
ANY
TIME
→

OCTOBER 2, 2014

Agenda

- 1** History of Parking Discussions
- 2** Traffic/Parking Data Collection & Study
- 3** Proposed On-Street Parking Permit Program
- 4** Public Comments

1 History of Parking Discussions



History of Parking Discussions

2008			2009			2010	
February	April	September	May	September	December	July	October
<p>13th – Planning Commission discusses parking issues for the Front Beach area</p> <p>26th – City Council approves Local Comprehensive Beach Management Plan for submission to SCDHEC OCRM</p>	<p>9th – Planning Commission discusses regulation of parking on state-owned roads</p>	<p>10th – Planning Commission adds parking issue and strategy to address it to the Transportation Element of the Comprehensive Plan</p>	<p>5th – Parking study of IOP Marina completed by Citadel engineering class</p>	<p>22nd – City Council holds public hearing for input to Amend Comprehensive Plan, which included transportation elements</p>	<p>9th – Planning Commission discusses parking issues with Police Chief</p>	<p>20th – Joint City Council/ Planning Commission meeting to discuss parking plan developed by the Planning Commission</p>	<p>19th – Joint City Council/ Planning Commission meeting to finish discussing the parking plan</p>
2011							
February	Spring	May	June	July	August	September	
<p>13th – Planning Commission holds public forum regarding parking issues previously discussed</p>	<p>White chalk line four feet from edge of pavement along Palm Blvd. installed</p> <p>“No Parking Here To Corner” signs installed on Carolina Blvd. and parts of Palm Blvd.</p>	<p>11th – City Council/ Planning Commission hold 3rd joint meeting to discuss the parking plan</p>	<p>6th – Ways and Means Committee holds meeting to review FY 12 Operating and Capital Budgets. City staff tasked with budgeting implementation of potential parking solutions from May 11th meeting</p>	<p>26th – Public hearing to collect input on amending an ordinance related to parking at existing beach accesses</p>	<p>City Council directs staff to develop RFQ to seek consultant to make recommendations for beach parking</p>	<p>20th – Instead of RFQ, Ways and Means Committee asks Planning Commission to revisit issue of beach access parking</p>	

History of Parking Discussions (cont.)

2012						2013	
January	February	March	April	June	August	June	September
11 th – Planning Commission organizes list of potential parking solutions into long and short-term goals	20 th – Joint City Council/ Planning Commission meeting to discuss parking management	More “No Parking Here To Corner” signs installed on Palm Blvd.	24 th – Stantec awarded contract for consultation related to Front Beach wayfinding signs	27 th – City receives \$40k grant in Accomodation Tax funds, allowing City to increase seasonal “Beach Services Officer” staff	28 th – Stantec awarded contract for Phase Two of wayfinding signs project and Managed Parking Program	Wayfinding signs installed throughout the island	24 th – Stantec awarded contract for three tasks for the Managed Parking Program

2014				
January	February	May	August	October
13 th – Stantec reported statuses to Public Safety Committee of Wayfinding Signs and Managed Parking Program	10 th – Staff gives brief update of Stantec’s work to Public Safety Committee	1 st – Joint City Council/ Planning Commission meeting with Stantec to discuss plans for data collection and next steps for Managed Parking Program	21 st – Joint City Council/ Planning Commission meeting where Stantec presented results of Summer 2014 data collection and potential strategies for the Managed Parking Program	2 nd – Public hearing to collect public comment on the proposed Managed Parking Program

Parking Concerns Discussed

- Public Safety
 - Emergency Vehicle Access
 - Pedestrian Safety
 - Intersection Sight Distance
 - Fire Hydrant Access
- Mitigate Traffic Congestion
- Trash and Debris from Beach Visitor Parking
- Unpermitted Uses of Public Right of Way
(Landscaping, Berms, Fencing to Eliminate On-Street Parking)



Parking Plan Requirements

- Comply with Beach Management Plan
- Balance the needs of Residents and Visitors



Parking Strategies Considered

- Shuttles/Trolleys
- Parking Garages
- Parking Nodes
- Parking Pass System
- Parking Meters
- Honor Boxes
- Electronic Signage off Island
- Acquire Additional Lots
- Incentives for High Occupancy Vehicles
- Make All Streets City Streets and Limit Parking
- Develop No Parking Districts
- Increase Parking Distances from Edge of Pavement
- Allow Parking on All Streets
- Parking Permit System

2 Traffic/Parking Data Collection & Analysis



Traffic/Parking Data Collection Sources

- IOP Permanent Count Stations
- SCDOT Permanent Count Station
- Stantec Traffic and Parking Counts

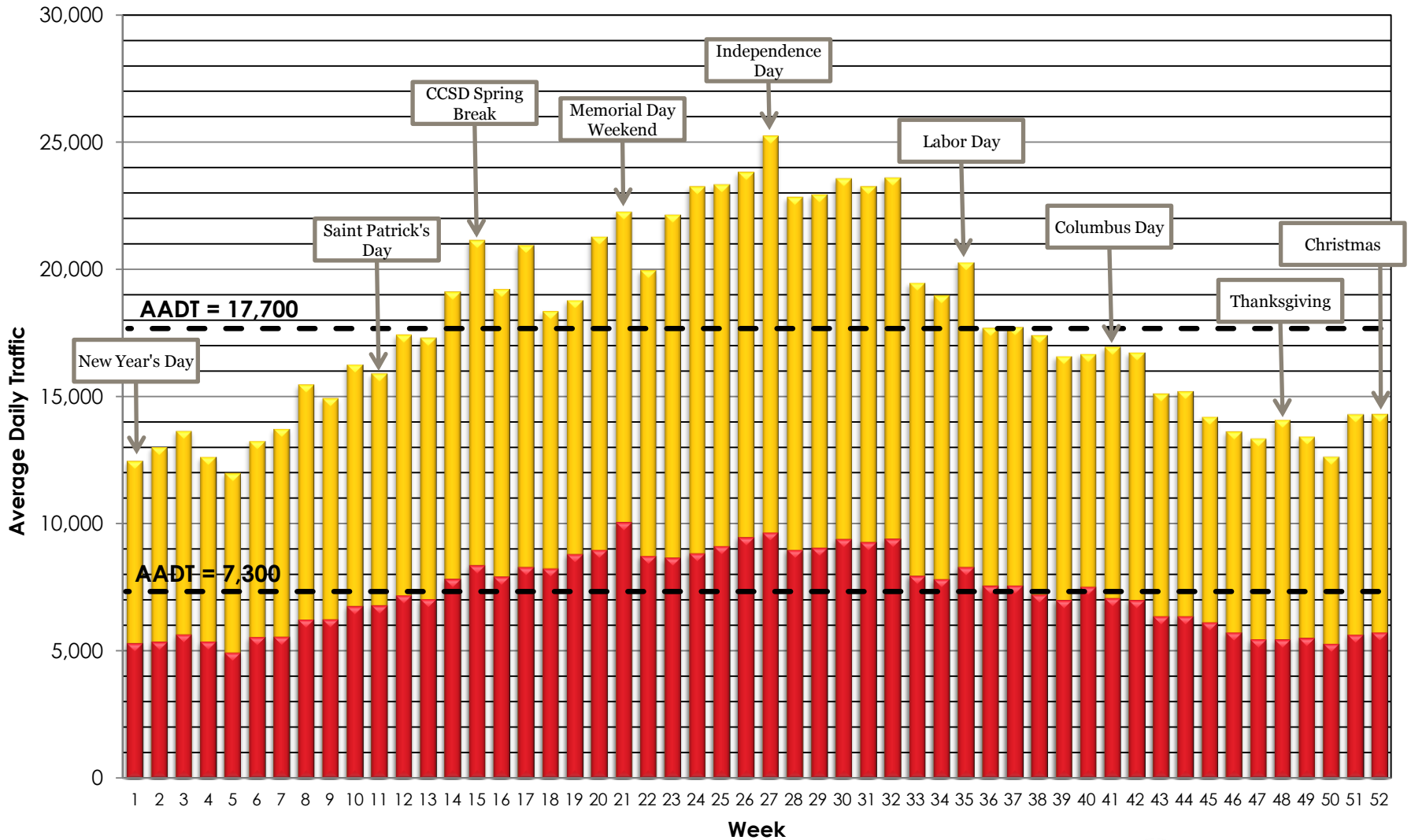


Stantec Traffic & Parking Data Collection Efforts

- Bi-Directional Traffic Counts at 7 Locations between May 23rd through May 29th
- Intersection Turning Counts – Saturday, May 24th (Memorial Day Weekend)
- Parking Accumulation Counts – Saturday, May 24th (Memorial Day Weekend)



Average Weekly Traffic (IOP Conn. & Palm Bl.)

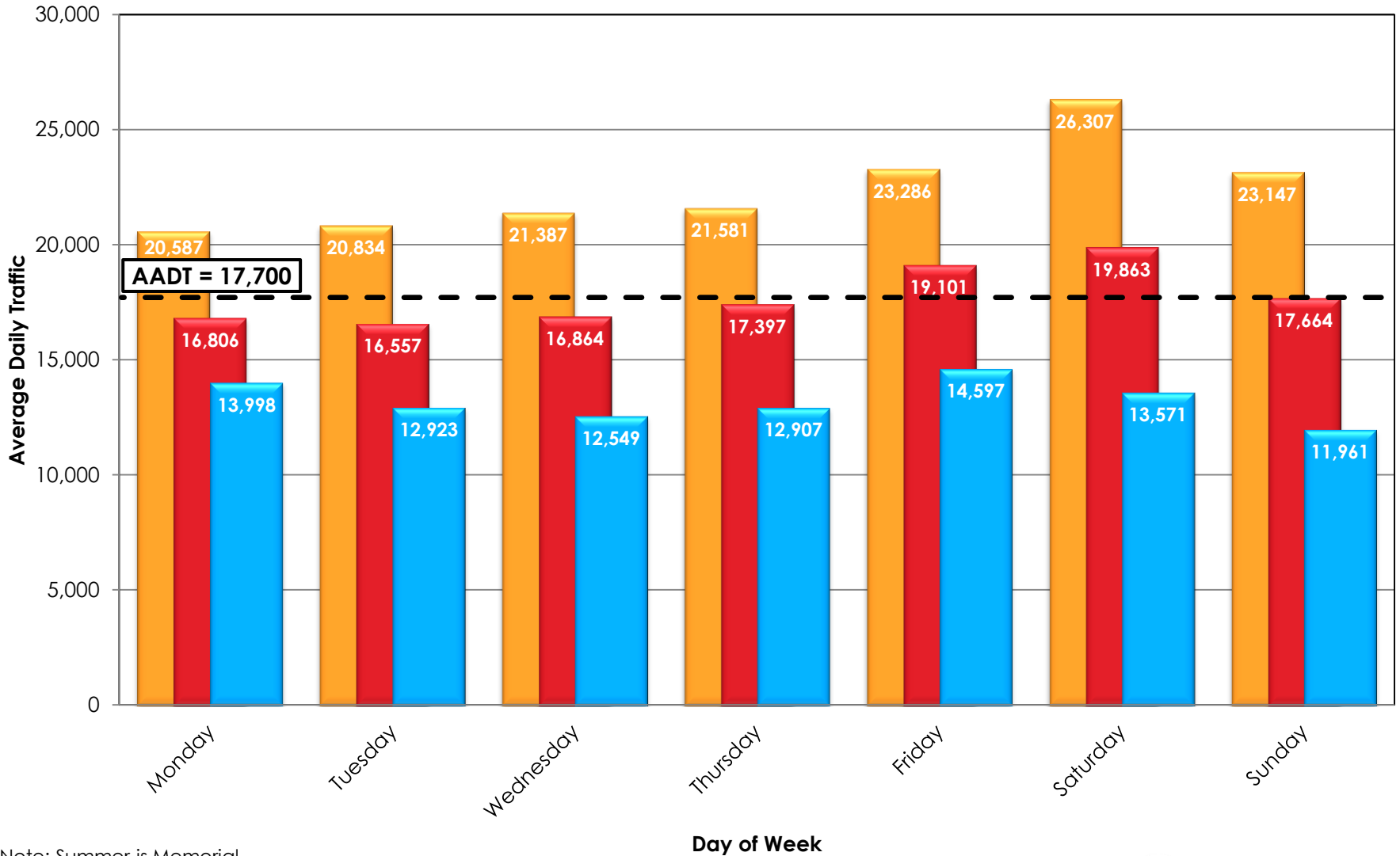


Source: Isle of Palms

IOP Connector Palm Boulevard



Average Daily Traffic (IOP Connector)

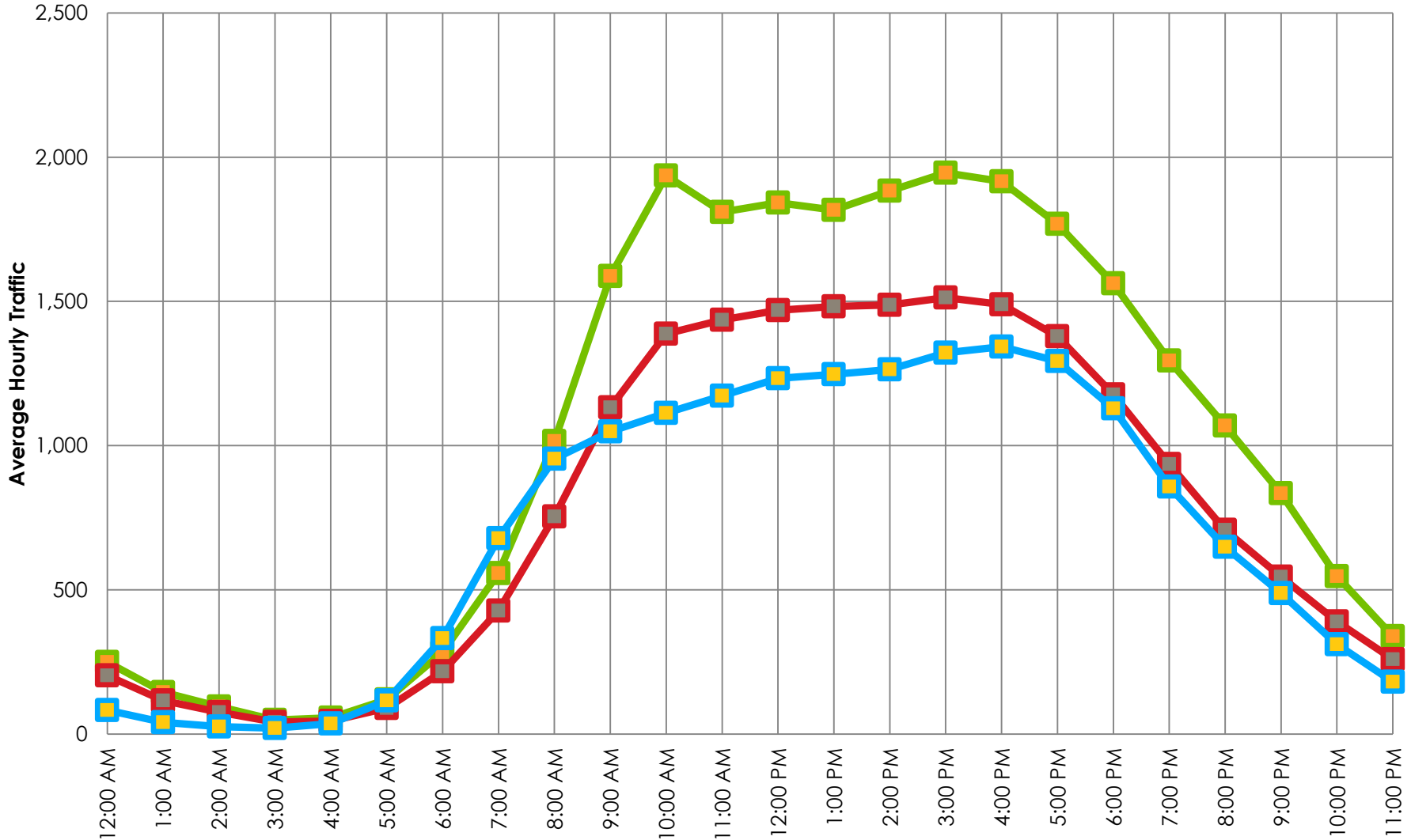


*Note: Summer is Memorial Day to Labor Day, Winter is December 1 to February 28.
Source: Isle of Palms

■ Summer* Average ■ Annual Average ■ Winter* Average



Average Hourly Traffic (IOP Connector)



*Note: Memorial Day to Labor Day
Source: Isle of Palms

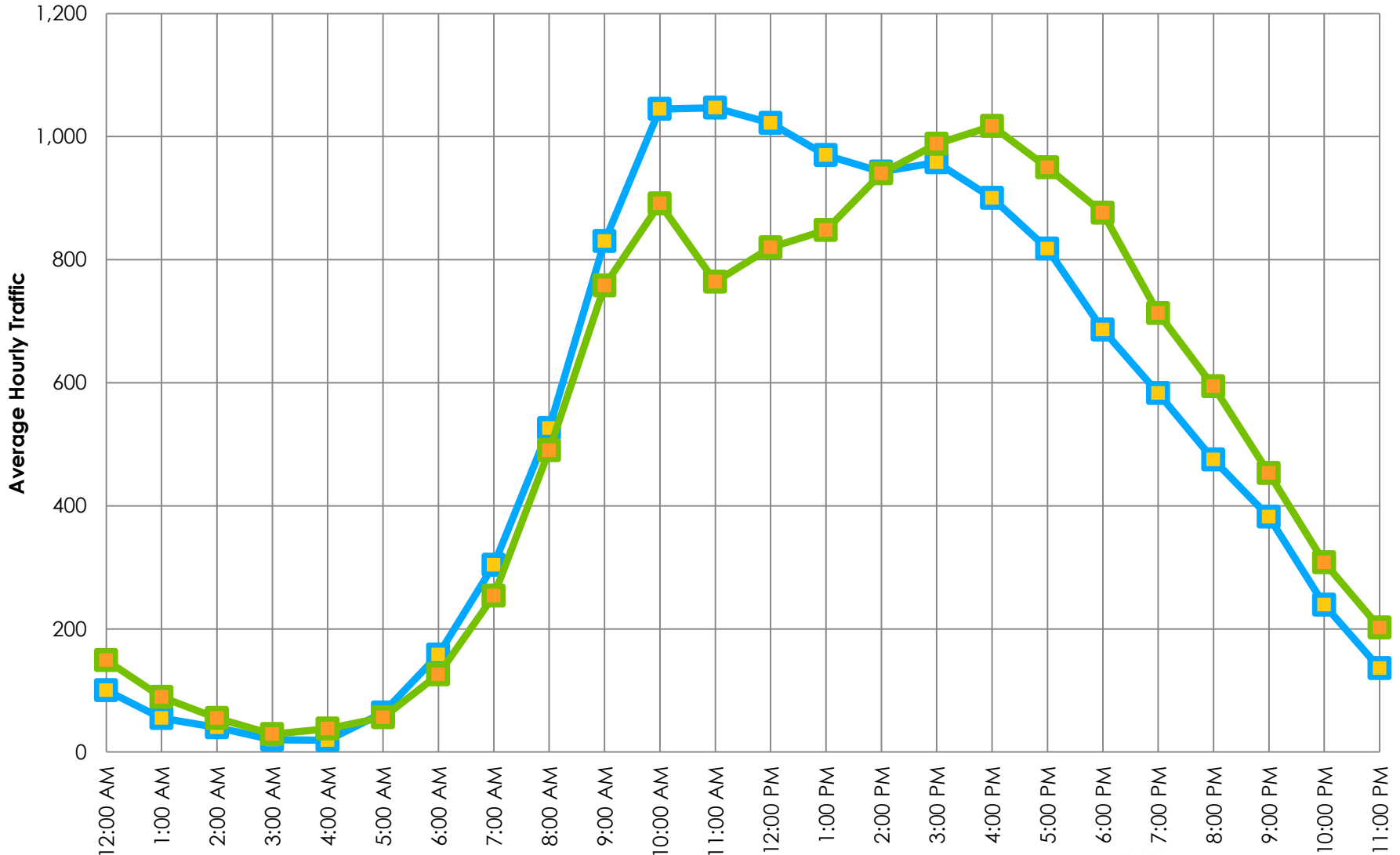
Summer* Sat & Sun Hourly Average

Sat & Sun Hourly Average

Tue, Wed, & Thu Hourly Average



Directional Hourly Traffic (IOP Connector) - Summer

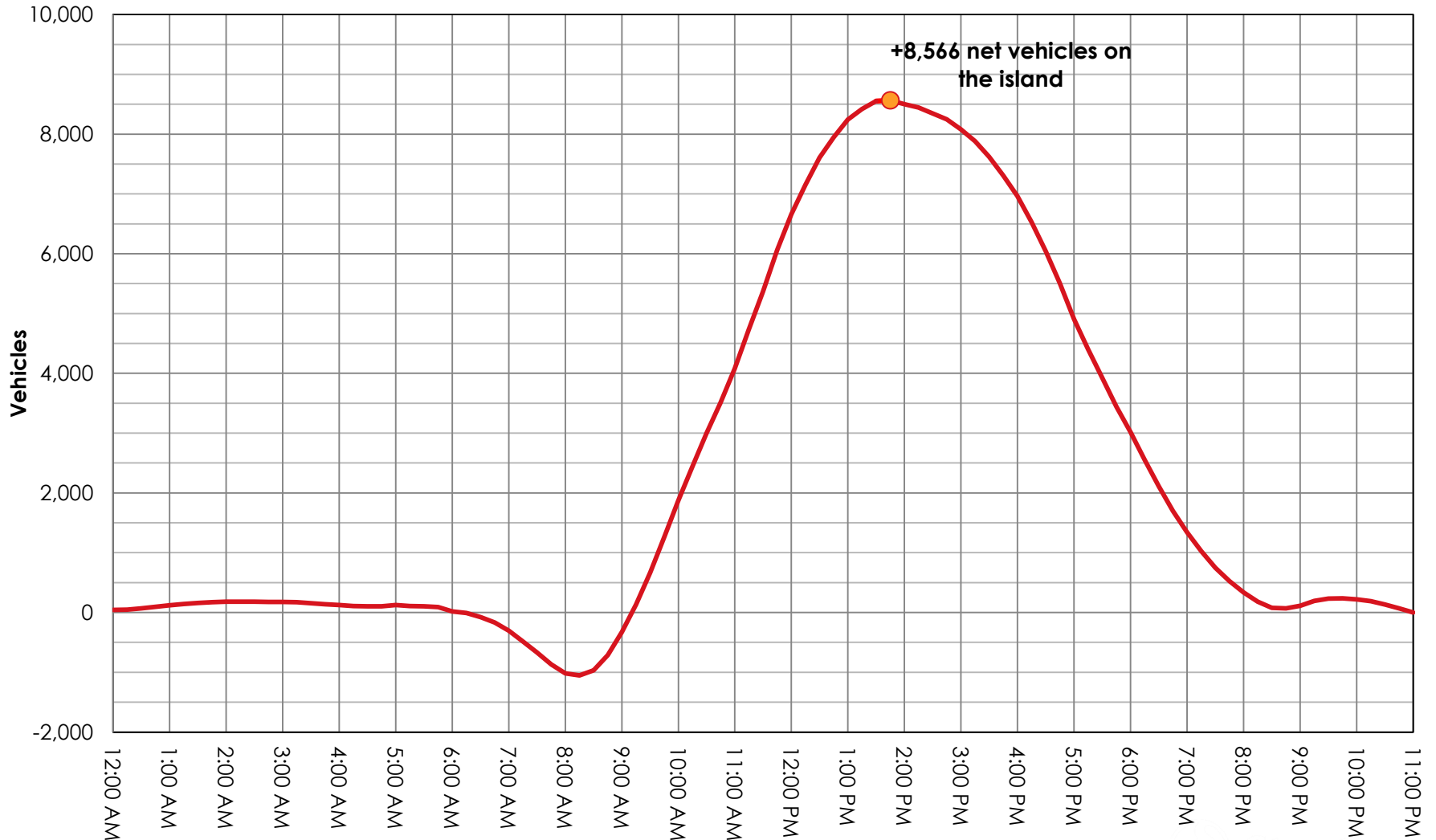


*Note: Memorial Day to Labor Day
Source: Isle of Palms

Inbound Traffic Outbound Traffic

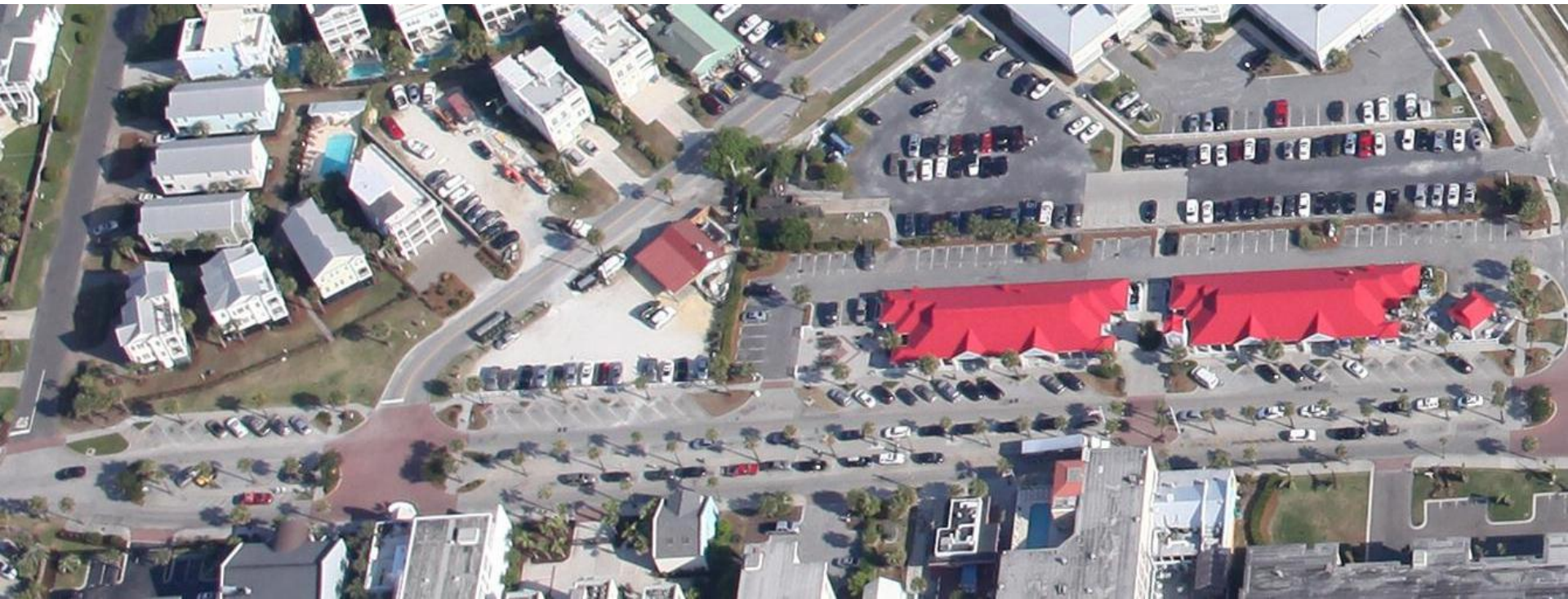


Inbound vs. Outbound Cumulative Traffic – Saturday



Parking Data Collection

- Aerial Photography from 9:00 AM to 6:00 PM (Every 30 minutes) Focused on Beach Parking
- On-street Parking Accumulation by Block
- Lot Parking Accumulation: City, County, Private
- Saturday May 24, 2014



9:00 AM



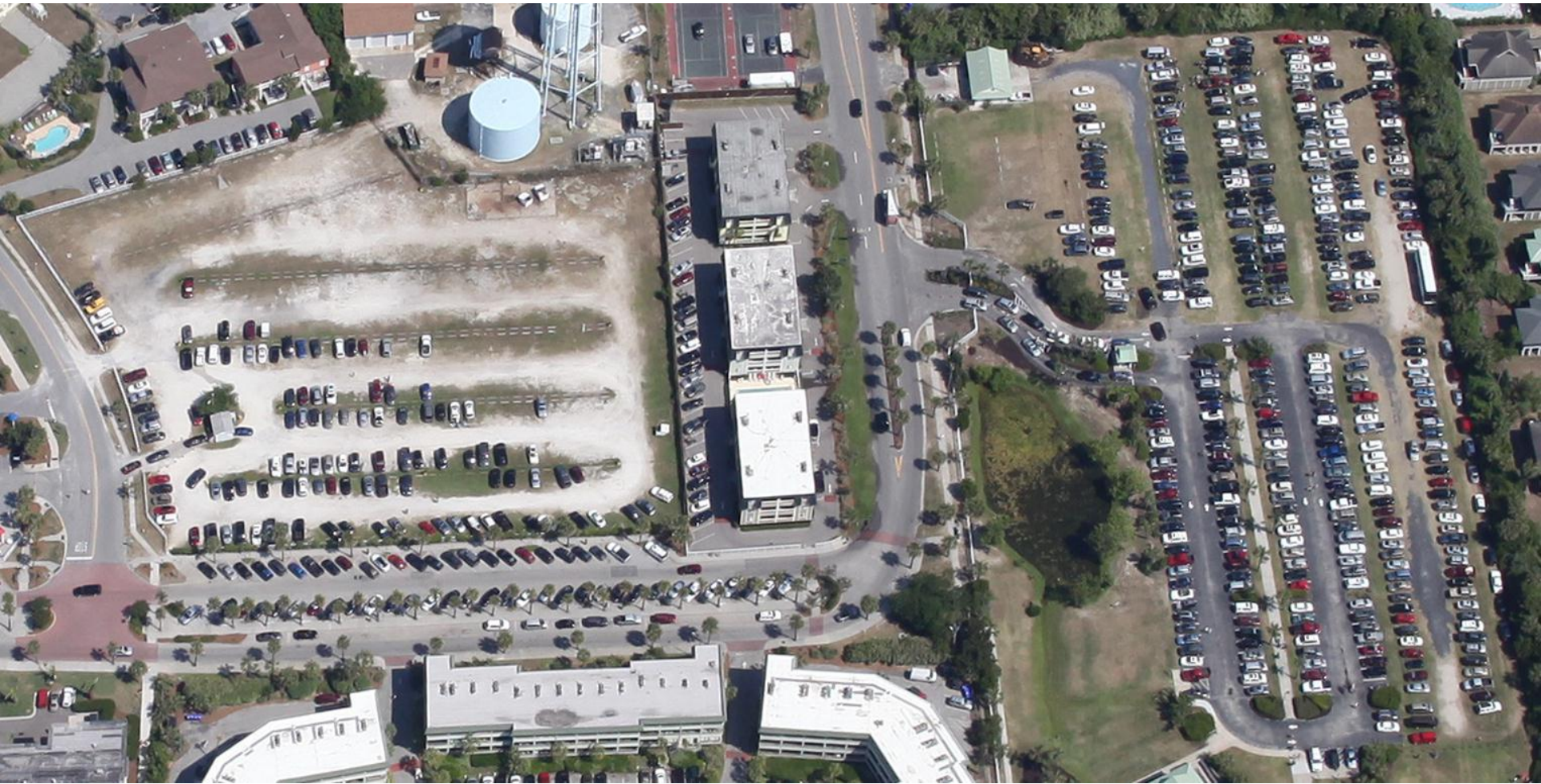
9:30 AM



10:00 AM



10:30 AM



11:00 AM



11:30 AM



12:00 PM



12:30 PM



1:00 PM



1:30 PM



2:00 PM



2:30 PM



3:00 PM



3:30 PM



4:00 PM



4:30 PM



5:00 PM



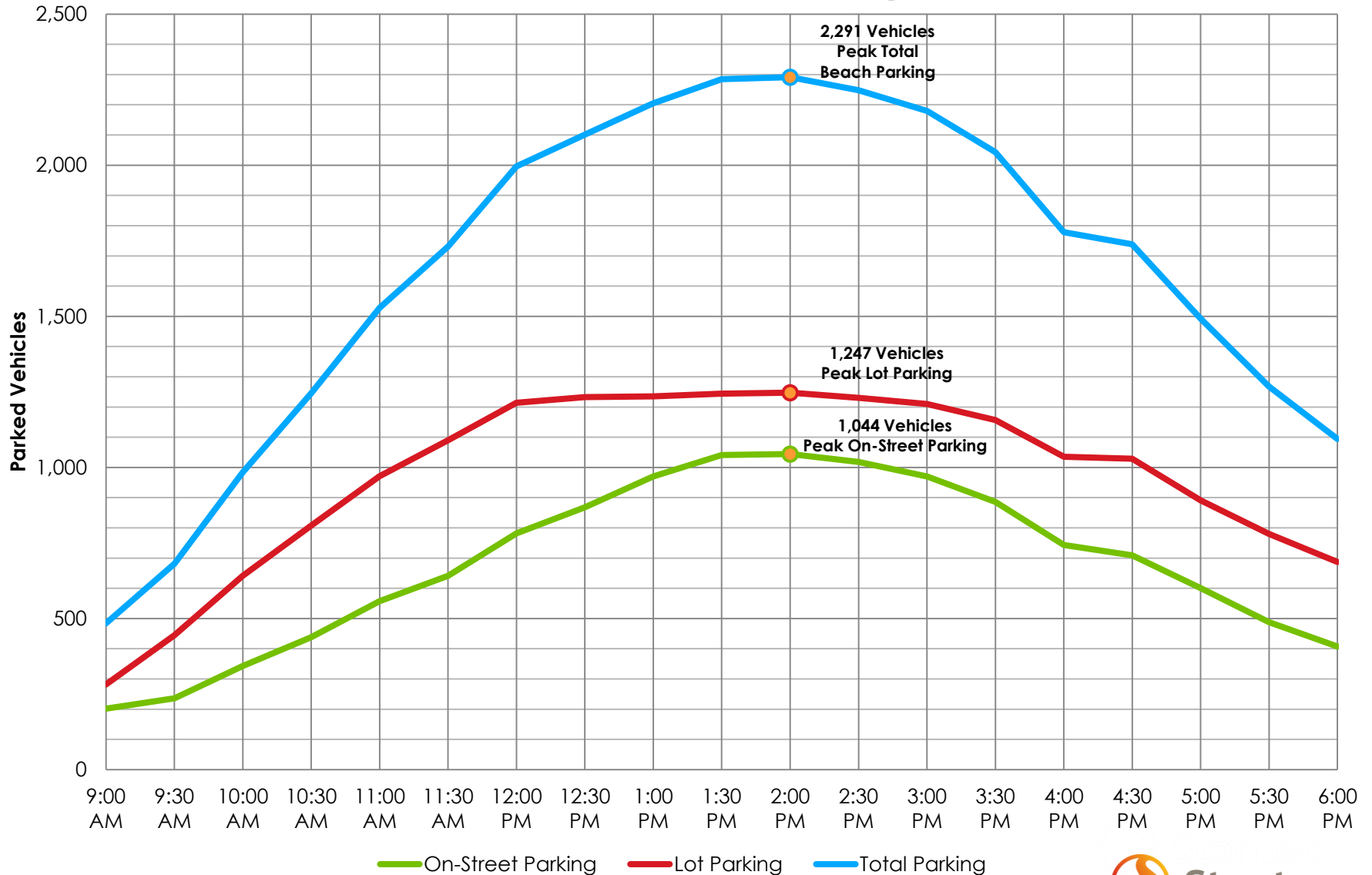
5:30 PM



6:00 PM



On-Street & Lot Parking Summary



3 Proposed On-Street Parking Permit Program



On-Street Parking Permit Program Overview

TIMES & DATES CURRENTLY PROPOSED

- Only during Peak Beach Season
- Required from 9AM – 6PM
- Allow permit parking only where on-street parking is allowed today



On-Street Parking Permit Program Overview

- Program would not discriminate between resident or visitor parking on public right-of-way
- Program would not apply to vehicles parked on private property
- Program would not apply to parkers at Municipal Lot, County Lot, or Pay Stations on Ocean Blvd



On-Street Parking Permit Program Attributes

- Able to manage number of on-street parkers
- Able to vary pricing by day of year
- Highly automated and easy to use
- Complies with Beach Management Plan



On-Street Parking Permit Program Operations

- Parking Permit Sales
 - On-line: Website and “App”
 - Public Safety Building during normal business hours
- Types of Permits
 - Annual
 - Weekly
 - Daily
- License plate is the parking credential
- Enforcement through matching license plates to permit holder database

Next Steps

- Permit Program Costs & Pricing
- Number of Permits
- Proposed Implementation for 2015 Season



On-Street Parking Permit Program Conclusion

- ✓ Able to manage number of visitors to ensure a safer number during peak season
- ✓ Contributes to reducing traffic congestion
- ✓ Allows visitors to plan their trips and confirm parking is available
- ✓ Complies with Beach Management Plan



4 Public Comments

