

**City of Isle of Palms**  
**Department of Public Works**  
**March 2015**  
**Donnie Pitts – Director**

**Sanitation:**

36.78 tons of C&D were transported to the Bees Ferry landfill  
2.5 hrs of overtime to replace a hydraulic hose on IT14G “cat”

**Landscaping/Road Maintenance:**

Serviced the pooper-scoopers 4 times.  
Provided daily garbage service for the Methodist Church Tea Room.  
Cleaned the Connector of large debris  
Mowed the 21<sup>st</sup> thru 41<sup>st</sup> rights-of-way and the 41<sup>st</sup> Ave. ditch one time  
Removed a large, dead pine tree from the 36<sup>th</sup> Ave. beach path

**Storm Water/Drainage:**

Pumped water on 46<sup>th</sup>, 50<sup>th</sup> and 51<sup>st</sup> Ave. on 3/2/15  
Pumped water on 50<sup>th</sup> Ave. on 3/23 and 3/24

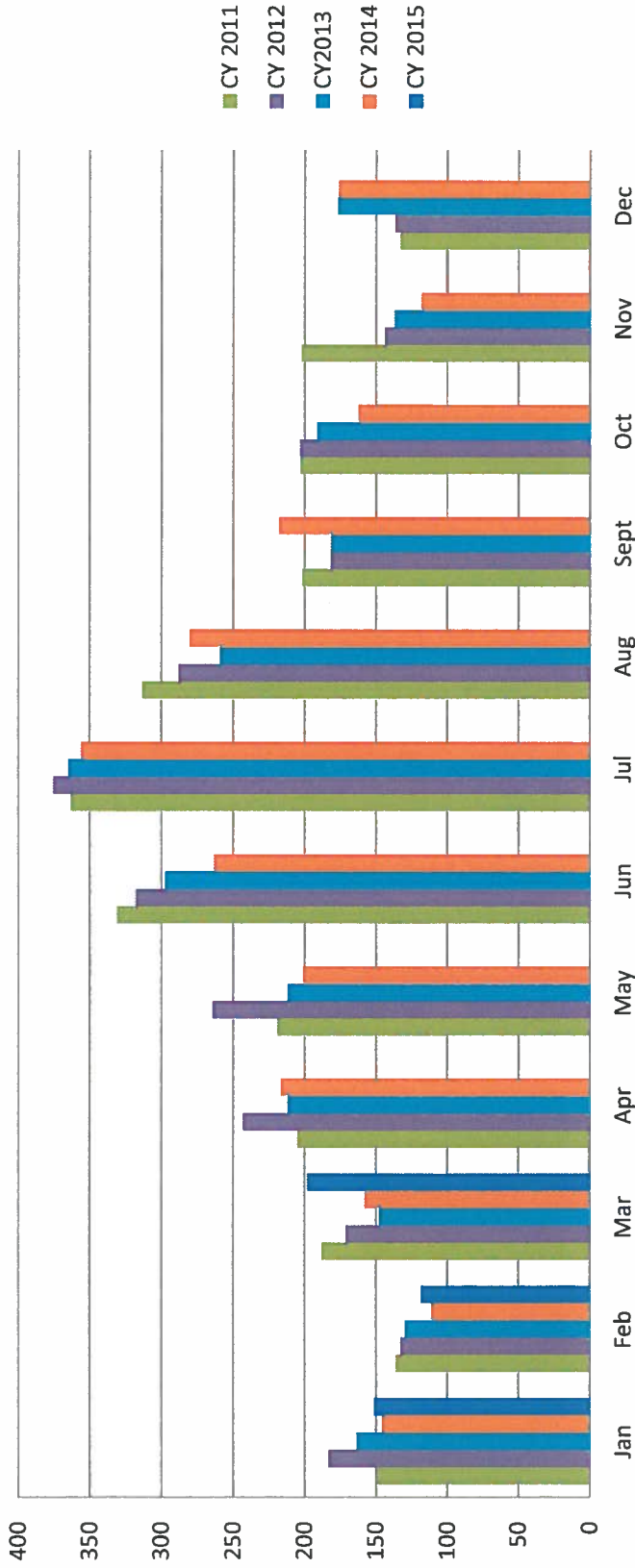
**5 Year Garbage**

	<u>CY 2011</u>	<u>CY 2012</u>	<u>CY2013</u>	<u>CY 2014</u>	<u>CY 2015</u>
Jan	149.35	183.11	163.58	145.63	151.16
Feb	136.13	132.82	129.73	111.19	118.32
Mar	187.91	171.14	147.49	157.97	197.79
Apr	204.82	242.75	211.4	216.39	
May	218.69	264.14	211.52	200.97	
Jun	331.02	317.8	297.11	263.22	
Jul	362.95	375.29	364.64	355.9	
Aug	313.33	287.83	259.06	280.34	
Sept	201.55	181.54	181.25	217.83	
Oct	202.8	203.08	191.05	162.4	
Nov	202.01	143.83	137.23	118.23	
Dec	133.17	136.79	176.46	176.04	
<b>TOTAL</b>	2643.73	2640.12	2470.52	2406.11	

denotes 2x week service

denotes single stream recycle

# 5 year Garbage Comparison



Yearly Yard Debris Comparison

**Tonnage**

CY 2011   CY 2012   CY 2013   CY 2014   CY 2015

Jan	91.10	100.71	176.07	141.65	126.72
Feb	121.60	106.55	114.67	127.61	140.12
Mar	167.97	189.88	199.83	184.77	155.30
Apr	219.85	174.22	257.42	267.14	
May	240.28	178.90	237.56	242.13	
Jun	159.84	173.42	177.76	186.26	
Jul	161.45	151.13	194.48	178.70	
Aug	164.59	163.35	176.14	150.93	
Sept	186.62	155.50	178.91	141.36	
Oct	162.16	175.34	172.46	206.77	
Nov	128.58	133.47	136.24	78.74	
Dec	118.22	105.08	112.79	125.85	
<b>TOTAL</b>	1922.26	1807.55	2134.33	2031.91	

# 5 yr yard debris

