

**City of Isle of Palms
Department of Public Works
January 2015
Donnie Pitts – Director**

Sanitation:

29.60 tons of C&D were transported to the Bees Ferry landfill.
IT 14 G “Cat” was back in service on 1/20/15.

Landscaping/Road Maintenance:

Serviced the pooper-scoopers 3 times.
Removed the tree from the stormwater ditch at 205 Forest Trail.
Removed a large pile of debris from the beach in front of Citadel
Beach House.
Repaired/welded the Breach Inlet boat ramp gate.
Cleaned and painted the handicap parking locations at 9th Ave. on
Ocean Blvd., 21st Ave. on Palm Blvd and in front of the
Public Safety Building on Pavilion Drive.

Charleston County:

County on the island cleaning ditches in Forest Trail.

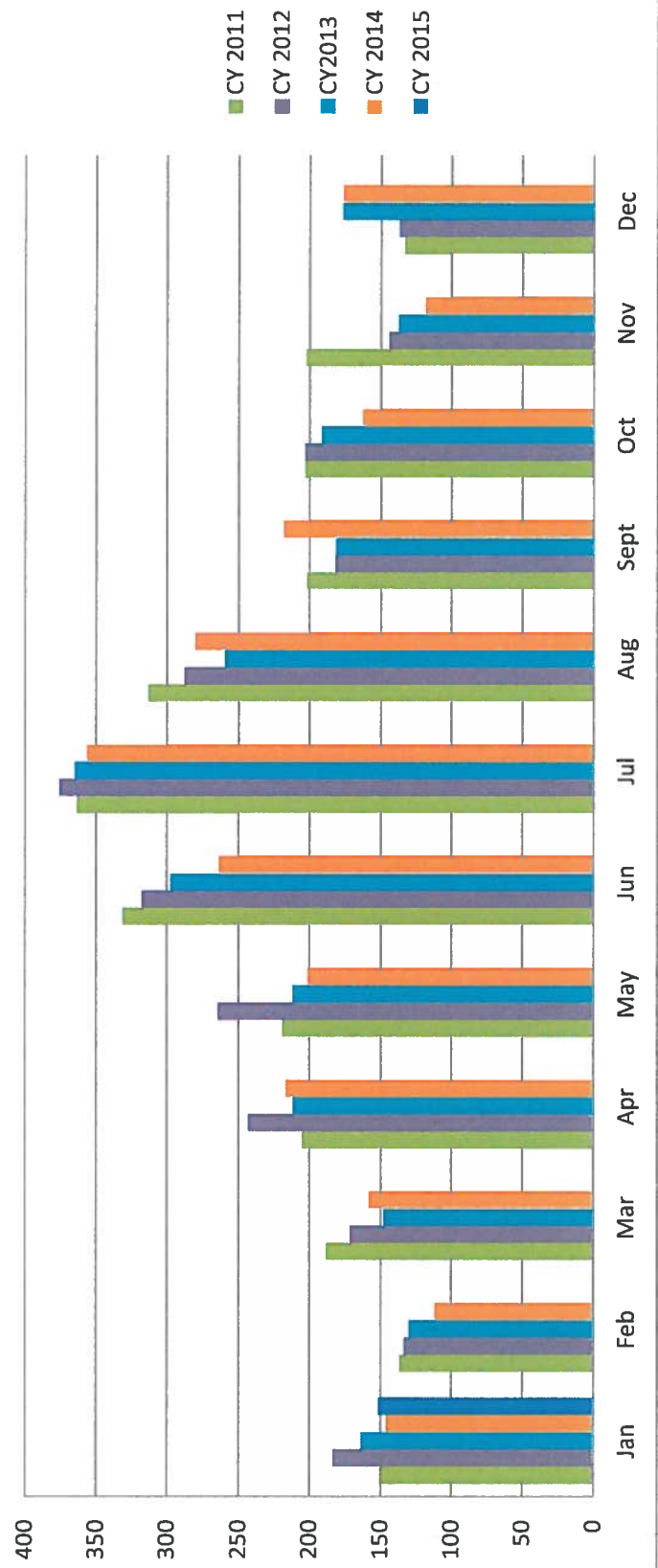
5 Year Garbage

	<u>CY 2011</u>	<u>CY 2012</u>	<u>CY2013</u>	<u>CY 2014</u>	<u>CY 2015</u>
Jan	149.35	183.11	163.58	145.63	151.16
Feb	136.13	132.82	129.73	111.19	
Mar	187.91	171.14	147.49	157.97	
Apr	204.82	242.75	211.4	216.39	
May	218.69	264.14	211.52	200.97	
Jun	331.02	317.8	297.11	263.22	
Jul	362.95	375.29	364.64	355.9	
Aug	313.33	287.83	259.06	280.34	
Sept	201.55	181.54	181.25	217.83	
Oct	202.8	203.08	191.05	162.4	
Nov	202.01	143.83	137.23	118.23	
Dec	133.17	136.79	176.46	176.04	
TOTAL	2643.73	2640.12	2470.52	2406.11	

denotes 2x week service

denotes single stream recycle

5 year Garbage Comparison



Yearly Yard Debris Comparison

Tonnage

CY 2011 CY 2012 CY 2013 CY 2014 CY 2015

Jan	91.1	100.71	176.07	141.65	126.72
Feb	121.6	106.55	114.67	127.61	
Mar	167.97	189.88	199.83	184.77	
Apr	219.85	174.22	257.42	267.14	
May	240.28	178.9	237.56	242.13	
Jun	159.84	173.42	177.76	186.26	
Jul	161.45	151.13	194.48	178.7	
Aug	164.59	163.35	176.14	150.93	
Sept	186.62	155.5	178.91	141.36	
Oct	162.16	175.34	172.46	206.77	
Nov	128.58	133.47	136.24	78.74	
Dec	118.22	105.08	112.79	125.85	
TOTAL	1922.26	1807.55	2134.33	2031.91	

5 yr yard debris

