

**City of Isle of Palms  
Department of Public Works  
November/December 2014  
Donnie Pitts – Director**

**Sanitation:**

No overtime to report.

16.47 tons of C&D were transported to the Bees Ferry landfill in November and 29.87 in December.

**Landscaping/Road Maintenance:**

Serviced the pooper-scoopers 2 times in November and 2 times in December.

Mowed the Breach Inlet right-of-way and beach path.

Trimmed the limb overhang from 10<sup>th</sup> Ave. to 13<sup>th</sup> Ave.

Mowed the 45<sup>th</sup> Ave. right-of-way on the non-oceanside of Palm Blvd.

Cleaned the Ocean Blvd commercial district from the Christmas tree ceremony.

**Storm Water:**

Eadies Drain and Vac. are cleaning the stormwater collection boxes on the island.

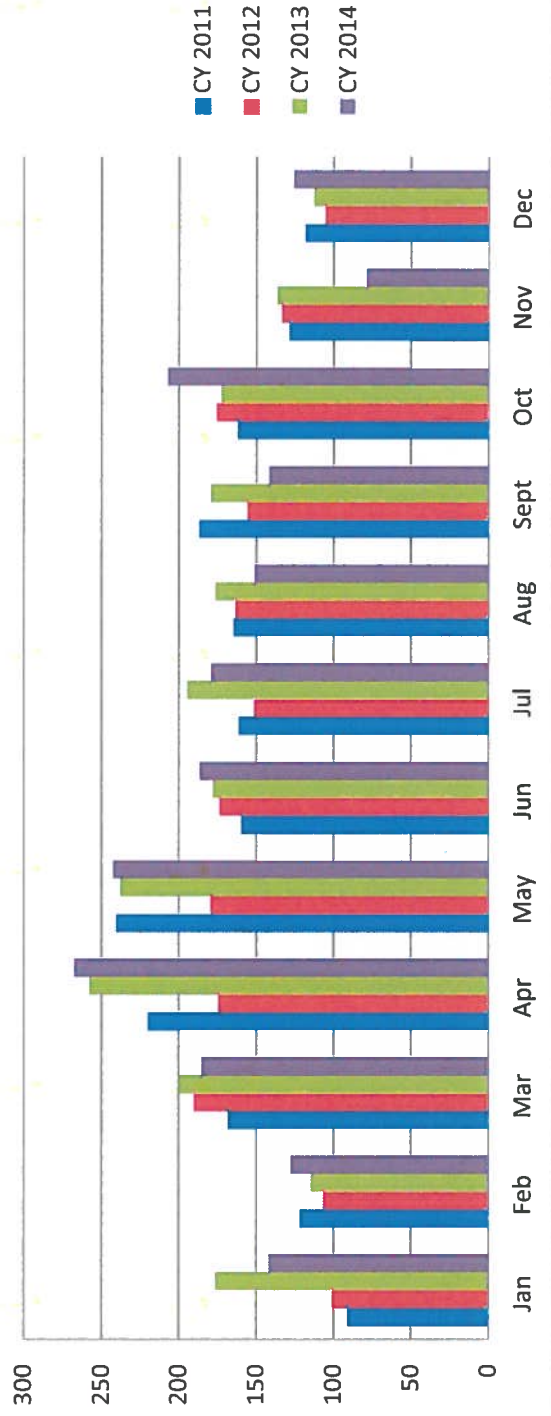
**Yearly Yard Debris Comparison**

**Tonnage**

**CY 2011   CY 2012   CY 2013   CY 2014**

Jan	91.1	100.71	176.07	141.65
Feb	121.6	106.55	114.67	127.61
Mar	167.97	189.88	199.83	184.77
Apr	219.85	174.22	257.42	267.14
May	240.28	178.9	237.56	242.13
Jun	159.84	173.42	177.76	186.26
Jul	161.45	151.13	194.48	178.7
Aug	164.59	163.35	176.14	150.93
Sept	186.62	155.5	178.91	141.36
Oct	162.16	175.34	172.46	206.77
Nov	128.58	133.47	136.24	78.74
Dec	118.22	105.08	112.79	125.85
<b>TOTAL</b>	1922.26	1807.55	2134.33	2031.91

# 4 yr yard debris



## 5 Year Garbage

	<u>CY 2009</u>	<u>CY 2010</u>	<u>CY 2011</u>	<u>CY 2012</u>	<u>CY2013</u>	<u>CY 2014</u>
<b>Jan</b>	154.9	163.04	149.35	183.11	163.58	145.63
<b>Feb</b>	174.42	134.49	136.13	132.82	129.73	111.19
<b>Mar</b>	238.66	208.97	187.91	171.14	147.49	157.97
<b>Apr</b>	240.06	223.43	204.82	242.75	211.4	216.39
<b>May</b>	275.02	202.79	218.69	264.14	211.52	200.97
<b>Jun</b>	374.58	352.9	331.02	317.8	297.11	263.22
<b>Jul</b>	427.97	410.92	362.95	375.29	364.64	355.9
<b>Aug</b>	351.25	349.31	313.33	287.83	259.06	280.34
<b>Sept</b>	252.55	181.61	201.55	181.54	181.25	217.83
<b>Oct</b>	166.9	169.78	202.8	203.08	191.05	162.4
<b>Nov</b>	203.71	186.79	202.01	143.83	137.23	118.23
<b>Dec</b>	236.66	178.23	133.17	136.79	176.46	176.04
<b>TOTAL</b>	3096.68	2762.26	2643.73	2640.12	2470.52	2406.11

denotes 2x week service

denotes single stream recycle

## 6 year Garbage Comparison

