

**City of Isle of Palms  
Department of Public Works  
February 2014  
Donnie Pitts – Director**

**Sanitation:**

12.20 tons of C&D were transported to the Bees Ferry landfill.  
One hour of overtime due to maintenance repairs.

**Landscaping/Road Maintenance:**

Serviced the pooper-scoopers 4 times.  
Installed and/or straightened several street signs on the island.  
Replaced the Connector board and Welcome sign lights.  
Cleaned and mowed the beach paths on the island.  
Cleaned and mowed the municipal lot.  
Cleaned the beach of debris from tides on 2/26/14.

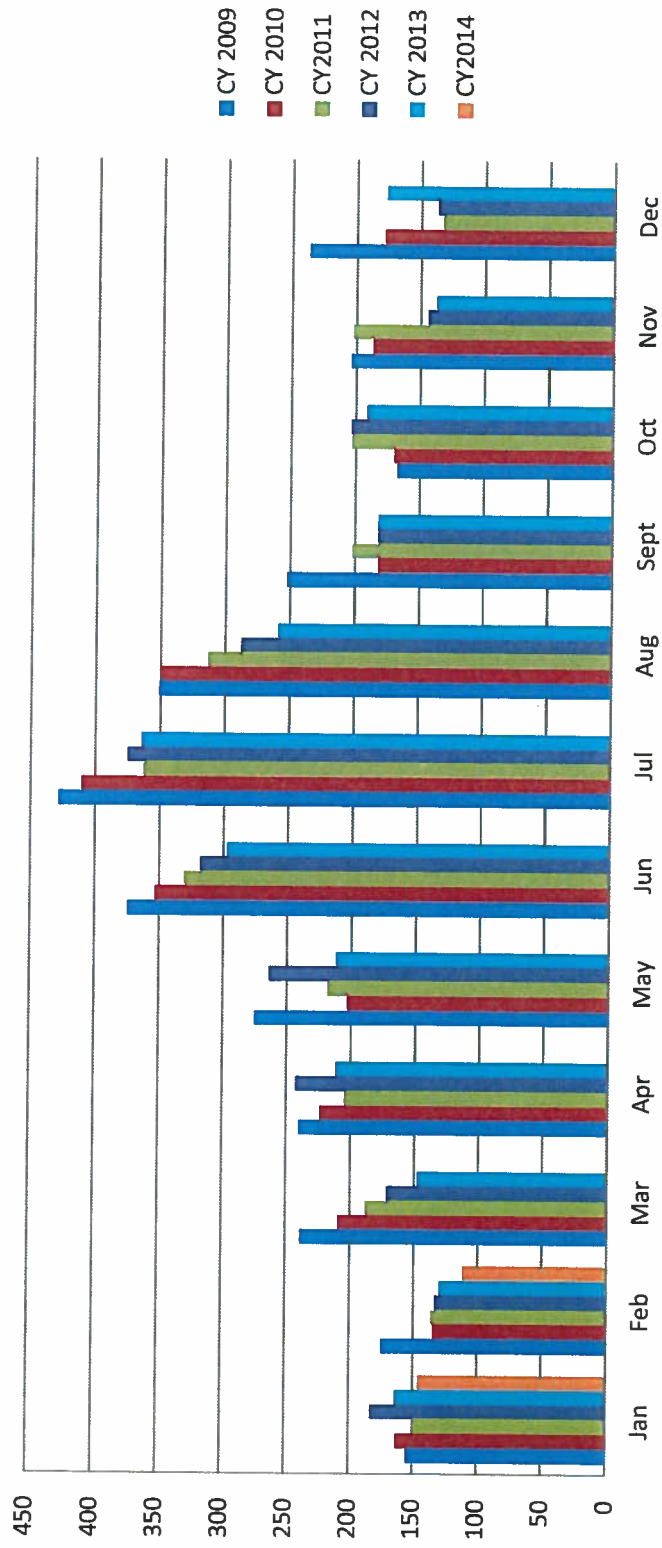
5 Year Garbage

	<u>CY 2009</u>	<u>CY 2010</u>	<u>CY 2011</u>	<u>CY 2012</u>	<u>CY2013</u>	<u>CY 2014</u>
Jan	154.9	163.04	149.35	183.11	163.58	145.63
Feb	174.42	134.49	136.13	132.82	129.73	111.19
Mar	238.66	208.97	187.91	171.14	147.49	
Apr	240.06	223.43	204.82	242.75	211.4	
May	275.02	202.79	218.69	264.14	211.52	
Jun	374.58	352.9	331.02	317.8	297.11	
Jul	427.97	410.92	362.95	375.29	364.64	
Aug	351.25	349.31	313.33	287.83	259.06	
Sept	252.55	181.61	201.55	181.54	181.25	
Oct	166.9	169.78	202.8	203.08	191.05	
Nov	203.71	186.79	202.01	143.83	137.23	
Dec	236.66	178.23	133.17	136.79	176.46	
<b>TOTAL</b>	3096.68	2762.26	2643.73	2640.12	2470.52	

denotes 2x week service

denotes single stream recycle

## 6 year Garbage Comparison



Yearly Yard Debris Comparison

**Tonnage**

CY 2011   CY 2012   CY 2013   CY 2014

Jan	91.1	100.71	176.07	141.65
Feb	121.6	106.55	114.67	127.61
Mar	167.97	189.88	199.83	
Apr	219.85	174.22	257.42	
May	240.28	178.9	237.56	
Jun	159.84	173.42	177.76	
Jul	161.45	151.13	194.48	
Aug	164.59	163.35	176.14	
Sept	186.62	155.5	178.91	
Oct	162.16	175.34	172.46	
Nov	128.58	133.47	136.24	
Dec	118.22	105.08	112.79	
<b>TOTAL</b>	1922.26	1807.55	2134.33	

# 4 yr yard debris

