

**City of Isle of Palms**  
**Department of Public Works**  
**April 2014**  
**Donnie Pitts – Director**

**Sanitation:**

42.64 tons of C&D were transported to the Bees Ferry landfill.

**Landscaping/Road Maintenance:**

Serviced the pooper-scoopers 5 times.

Cleaned the sidewalk from 10<sup>th</sup> Avenue to 12<sup>th</sup> Avenue.

Cleaned the Breach Inlet sidewalk and parking area.

Mowed the right-of-way from 21<sup>st</sup> – 41<sup>st</sup> Avenues.

Beach sweeps were April 11<sup>th</sup> and April 24<sup>th</sup>.

Straightened several street signs on the island

Cleaned the City compactor area 2 times.

**Stormwater:**

8 hours of overtime to pump water from flooding on 46<sup>th</sup>, 49<sup>th</sup> 50<sup>th</sup>,  
51<sup>st</sup> and 52<sup>nd</sup> Ave.

Pumps operated on 4/19 and 4/28 thru 4/30.

**Special Project:**

Hazardous waste day was held on 4/26/2014. 4 employees worked  
5 hours overtime each to assist residents. 117 cars partici-  
pated.

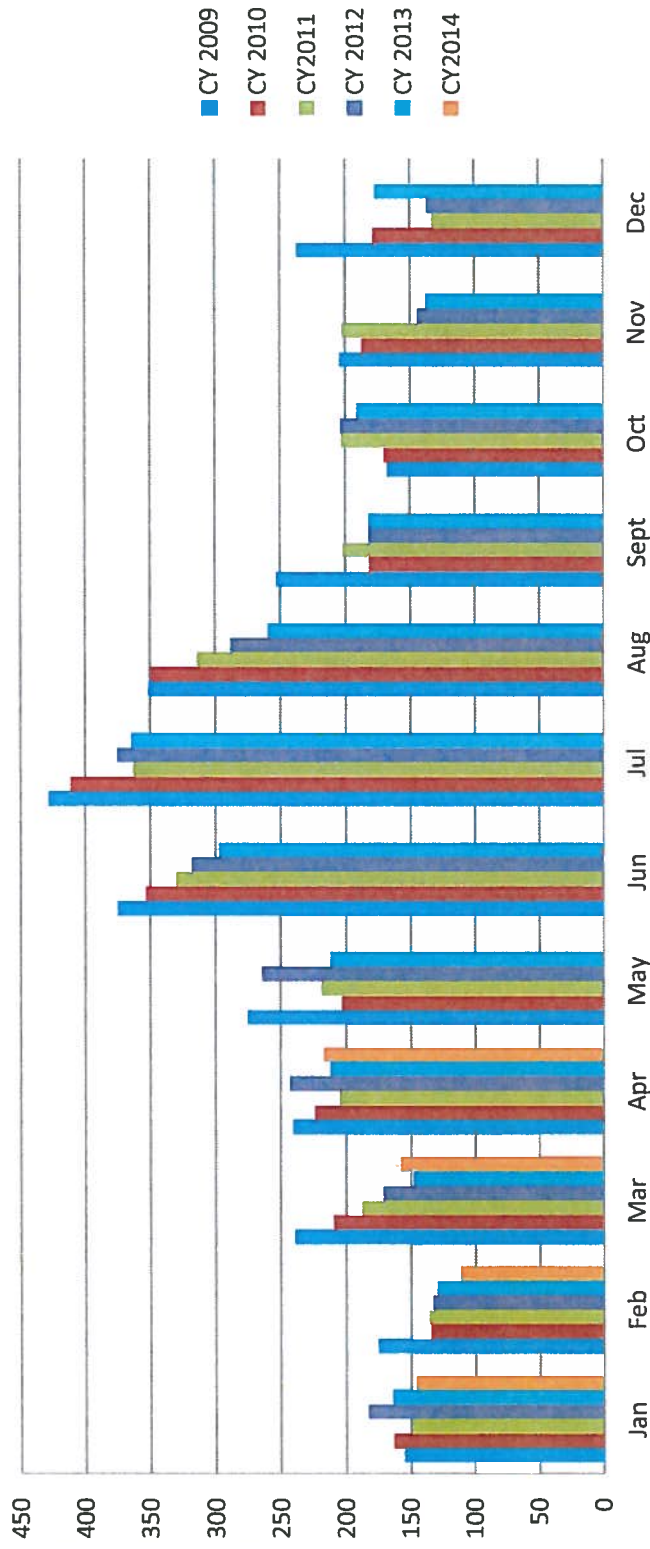
5 Year Garbage

	<u>CY 2009</u>	<u>CY 2010</u>	<u>CY 2011</u>	<u>CY 2012</u>	<u>CY2013</u>	<u>CY 2014</u>
Jan	154.9	163.04	149.35	183.11	163.58	145.63
Feb	174.42	134.49	136.13	132.82	129.73	111.19
Mar	238.66	208.97	187.91	171.14	147.49	157.97
Apr	240.06	223.43	204.82	242.75	211.4	216.39
May	275.02	202.79	218.69	264.14	211.52	
Jun	374.58	352.9	331.02	317.8	297.11	
Jul	427.97	410.92	362.95	375.29	364.64	
Aug	351.25	349.31	313.33	287.83	259.06	
Sept	252.55	181.61	201.55	181.54	181.25	
Oct	166.9	169.78	202.8	203.08	191.05	
Nov	203.71	186.79	202.01	143.83	137.23	
Dec	236.66	178.23	133.17	136.79	176.46	
<b>TOTAL</b>	3096.68	2762.26	2643.73	2640.12	2470.52	

denotes 2x week service

denotes single stream recycle

## 6 year Garbage Comparison



5 Year Garbage

	<u>CY 2009</u>	<u>CY 2010</u>	<u>CY 2011</u>	<u>CY 2012</u>	<u>CY2013</u>	<u>CY 2014</u>
Jan	154.9	163.04	149.35	183.11	163.58	145.63
Feb	174.42	134.49	136.13	132.82	129.73	111.19
Mar	238.66	208.97	187.91	171.14	147.49	157.97
Apr	240.06	223.43	204.82	242.75	211.4	216.39
May	275.02	202.79	218.69	264.14	211.52	
Jun	374.58	352.9	331.02	317.8	297.11	
Jul	427.97	410.92	362.95	375.29	364.64	
Aug	351.25	349.31	313.33	287.83	259.06	
Sept	252.55	181.61	201.55	181.54	181.25	
Oct	166.9	169.78	202.8	203.08	191.05	
Nov	203.71	186.79	202.01	143.83	137.23	
Dec	236.66	178.23	133.17	136.79	176.46	
<b>TOTAL</b>	3096.68	2762.26	2643.73	2640.12	2470.52	

denotes 2x week service

denotes single stream recycle

## 6 year Garbage Comparison

