

City of Isle of Palms
Department of Public Works
January 2013
Donnie Pitts, Director

Sanitation:

25.71 tons of C&D were transported to the Bees Ferry Landfill.
No overtime in January.

Landscaping/Road Maintenance

Serviced the pooper-scoopers 3 times.
Cleaned the debris from the Palm Blvd. right-of-way from the high winds.
Cleaned the sidewalk at Breach Inlet from 10th Avenue to 13th Avenue.
Cleared the 27th Avenue and Cameron Blvd. right-of-way per IOPPD.
One e-waste pickup from Creative Recycling on 1/11/13.

Stormwater:

Charleston County Public Works cleaned the ditches: 20th Ave on 1/9/13,
25th Ave on 1/10/13, 28th Ave on 1/15/13, 32nd Ave/Forest Trail on
1/17/13, Hartnett/37th Ave on 1/23/13 and 41st Ave on 1/24/13

SCDOT:

SCDOT repaired the stormwater valve at Carolina and Palm Blvd on 1/9/13
and cleaned/vacuumed Carolina and Palm Blvd stormwater system on
1/24/13.

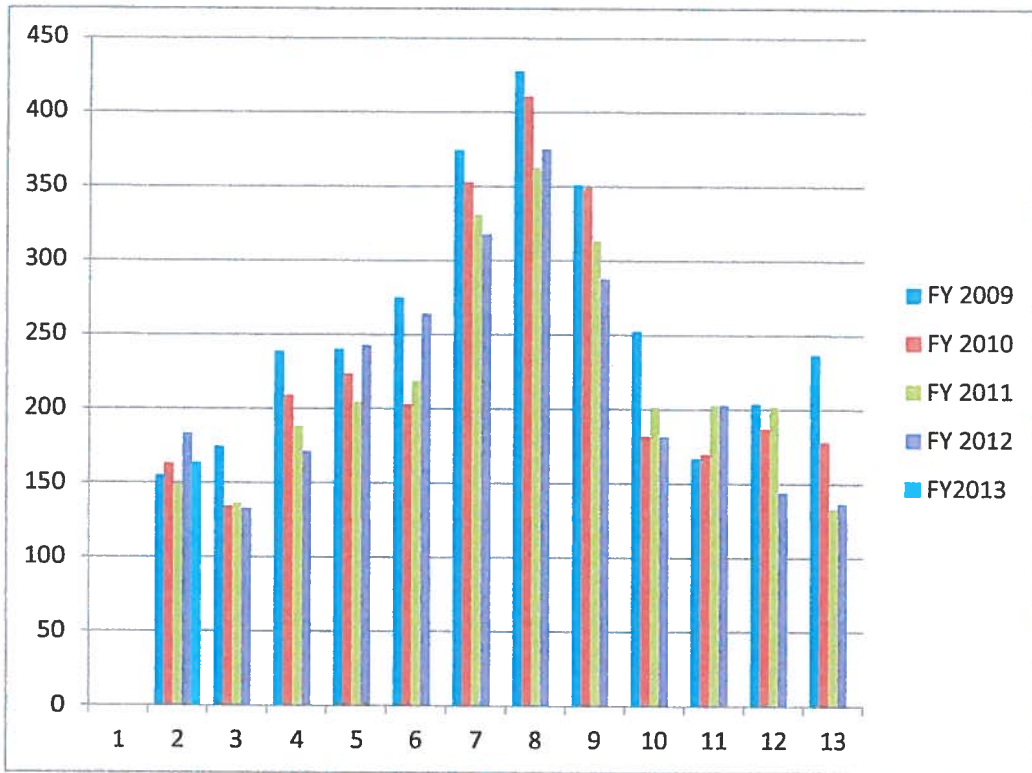
SCDOT repaired/replaced sidewalks on several sections of Palm Blvd.

5 Year Garbage

	<u>FY 2009</u>	<u>FY 2010</u>	<u>FY 2011</u>	<u>FY 2012</u>	<u>FY2013</u>
January	154.9	163.04	149.35	183.11	163.58
February	174.42	134.49	136.13	132.82	
March	238.66	208.97	187.91	171.14	
April	240.06	223.43	204.82	242.75	
May	275.02	202.79	218.69	264.14	
June	374.58	352.9	331.02	317.8	
July	427.97	410.92	362.95	375.29	
August	351.25	349.31	313.33	287.83	
September	252.55	181.61	201.55	181.54	
October	166.9	169.78	202.8	203.08	
November	203.71	186.79	202.01	143.83	
December	236.66	178.23	133.17	136.79	
TOTAL	3096.68	2762.26	2643.73	2640.12	

2x week

denotes single stream recycle



Yearly Yard Debris Comparison

Tonnage

Month	<u>2011</u>	<u>2012</u>	<u>2013</u>
January	91.1	100.71	176.07
February	121.6	106.55	
March	167.97	189.88	
April	219.85	174.22	
May	240.28	178.9	
June	159.84	173.42	
July	161.45	151.13	
August	164.59	163.35	
September	186.62	155.5	
October	162.16	175.34	
November	128.58	133.47	
December	118.22	105.08	
TOTAL	1922.26	1807.55	

