

**City of Isle of Palms  
Department of Public Works  
September 2012  
Donnie Pitts- Director**

**Sanitation:**

22.21 tons of C&D were transported to the Bees Ferry landfill.

**Landscaping/Road Maintenance:**

Serviced the pooper-scoopers 3 times.

Cleaned the beach of debris on September 6<sup>th</sup>, 14<sup>th</sup>, 20<sup>th</sup> and 28<sup>th</sup>.

Cleaned the Breach Inlet sidewalk.

Cleaned the sidewalk from 12<sup>th</sup> Ave. thru 21<sup>st</sup> Ave.

Initiated fall beach path maintenance.

Mowed the right-of-way from 21<sup>st</sup> thru 57<sup>th</sup> two times.

Cleaned the parking lot and compactor in preparation for the Isle of Palms Connector Run.

Mowed the old Building Dept. grounds 2 times.

Installed 1 new picnic table at Front Beach.

**Charleston County:**

Charleston County is continuing work on the 21<sup>st</sup> Ave. stormwater system.

**Stormwater:**

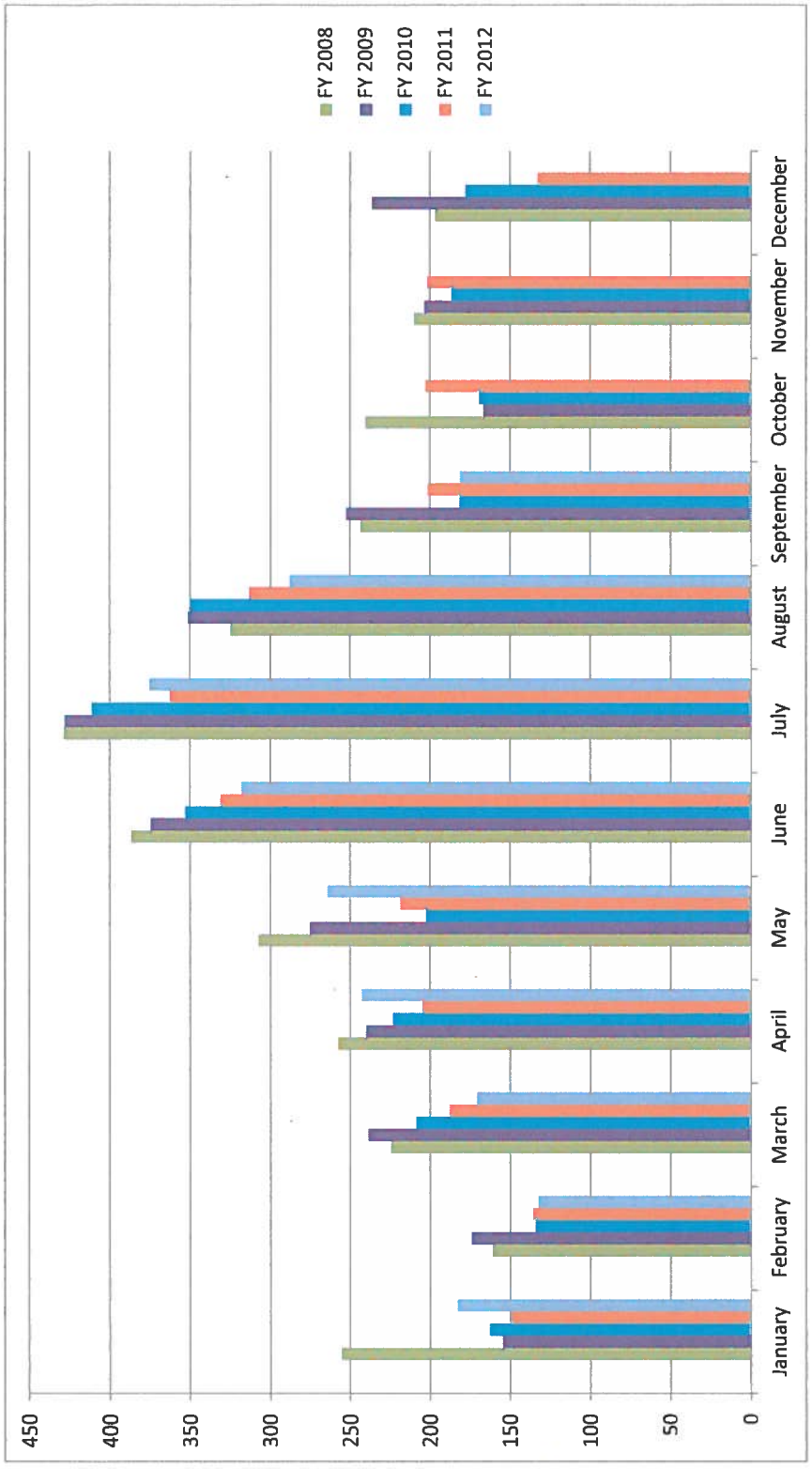
Eadies Drain and Vac. are cleaning the vegetation out of the open ditches.

FY 2008      FY 2009      FY 2010      FY 2011      FY 2012

January	255.58	154.9	163.04	149.35	183.11
February	161.17	174.42	134.49	136.13	132.82
March	224.81	238.66	208.97	187.91	171.14
April	257.63	240.06	223.43	204.82	242.75
May	307.39	275.02	202.79	218.69	264.14
June	386.63	374.58	352.9	331.02	317.8
July	428.42	427.97	410.92	362.95	375.29
August	324.77	351.25	349.31	313.33	287.83
September	243.67	252.55	181.61	201.55	181.54
October	240.38	166.9	169.78	202.8	
November	210.16	203.71	186.79	202.01	
December	197.12	236.66	178.23	133.17	
<b>TOTAL</b>	3237.73	3096.68	2762.26	2643.73	2156.42

2x week

denotes single stream recycle



**Tonnage**

<b>Month</b>	<b><u>2011</u></b>	<b><u>2012</u></b>
January	91.1	100.71
February	121.6	106.55
March	167.97	189.88
April	219.85	174.22
May	240.28	178.9
June	159.84	173.42
July	161.45	151.13
August	164.59	163.35
September	186.62	155.5
October	162.16	
November	128.58	
December	118.22	
<b>TOTAL</b>	1922.26	1393.66

